

TECHNICAL MANUAL

**ORGANIZATIONAL, DIRECT SUPPORT AND
GENERAL SUPPORT MAINTENANCE REPAIR PARTS AND SPECIAL TOOLS LISTS
(INCLUDING DEPOT MAINTENANCE REPAIR PARTS AND SPECIAL TOOLS)**

FOR

TEST SET GROUP, RADAR OQ-59/APS-94D

(NSN 6625-00-194-2842)

HEADQUARTERS, DEPARTMENT OF THE ARMY

MARCH 1976

TECHNICAL MANUAL

No. 11-5995-207-24P

**HEADQUARTERS,
DEPARTMENT OF THE ARMY
WASHINGTON, DC, 4 March 1976**

**Organizational, Direct Support and
General Support Maintenance
Repair Parts and Special Tools Lists
(Including Depot Maintenance Repair Parts and Special Tools)
For
TEST SET GROUP, RADAR OQ-59/APS-94D
(NSN 6625-00-194-2842)**

Current as of 15 October 1975

	Page	Illus Figure
SECTION I. Introduction	1	
II. Repair Parts List	5	
GROUP 00 Test Set Group, Radar, 00-59/ASP-94D	5	1
01 Accessory Kit Radar Test Set Group MK-1209/ASP-94D	5	2
02 Simulator-Monitor SM-567/ASP-94D	5	3
03 Monitor, Electrical Power MX-8570/ASP-94D	9	4
SECTION III Special tools list	16	
GROUP 04 Special Tools	16	5
SECTION IV Federal Stock Number and Parts Number index	18	

SECTION I INTRODUCTION

1. Scope

This manual lists repair parts; special tools; and other support equipment required for operation and performance of organizational, direct support, general support, and depot maintenance of the Test set Group, Radar, OQ-59/APS-94D.

2. General

This manual of repair parts and special tools lists is divided into the following sections:

a. *Section II. Repair Parts List.* A list of repair parts authorized for use in performance of maintenance. The list also includes parts which must be removed for replacement of the authorized parts. Parts lists are composed of functional groups in ascending numerical sequence, with the parts in each group listed in figure and item number sequence.

b. *Section III. Special Tools List.* A list of special tools, TMDE, and support equipment authorized for the performance of maintenance at the general support level.

c. *Section IV. Federal Stock Number and Part Number Index.* A list, in ascending numerical sequence, of all Federal stock numbers appearing in the listings, followed by a list, in alphabetic sequence, of all part numbers appearing in the listings. Federal stock number and part numbers are cross-referenced to each illustration figure and item number appearance.

3. Explanation of Columns

The following provides an explanation of columns found in the tabular listings:

a. *Illustration.* This column is divided as follows:

(1) *Figure number.* Indicates the figure number of the illustration in which the item is shown.

(2) *Item number.* The number used to identify each item called out in the illustration.

b. *Source, Maintenance, and Recoverability Codes (SMR).*

(1) *Source code.* Source codes are assigned to support items to indicate the manner of acquiring support items for maintenance, repair, or overhaul of end items. Source codes are entered in the first and second positions of the Uniform SMR Code format as follows:

Code	Definition
PA—	Item procured and stocked for anticipated or known usage.
PD—	Support item, excluding support equipment, procured for initial issue or outfitting and stocked only for subsequent or additional initial issues or outfittings. Not subject to automatic replenishment.

PE—	Support equipment procured and stocked for initial issue or outfitting to specified maintenance repair activities.
XB—	Item is not procured or stocked. If not available through salvage, requisition.

(2) *Maintenance code.* Maintenance codes are assigned to indicate the levels of maintenance authorized to USE and REPAIR support items. The maintenance codes are entered in the third and fourth positions of the Uniform SMR Code format as follows:

(a) The maintenance code entered in the third position will indicate the lowest maintenance level authorized to remove, replace, and use the support item. The maintenance code entered in the third position will indicate one of the following levels of maintenance:

Code	Application/Explanation
O—	Support item is removed, replaced, used at the organizational level.
H—	Support item is removed, replaced, used at the general support level.

(b) The maintenance code entered in the fourth position indicates whether the item is to be repaired and identifies the lowest maintenance level with the capability to perform complete repair (i.e., all authorized maintenance functions). This position will contain one of the following maintenance codes:

Code	Application/Explanation
H—	The lowest maintenance level capable of complete repair of the support item is the general support level.
D—	The lowest maintenance level capable of complete repair of the support item is the depot level, performed by depot.
Z—	Nonreparable. No repair is authorized.

(3) *Recoverability code.* Recoverability codes are assigned to support items to indicate the disposition action on unserviceable items. The recoverability code is entered in the fifth position of the Uniform SMR Code format as follows:

Recoverability Codes	Definition
Z—	Nonreparable item. When unserviceable, condemn and dispose at the level indicated in position 3.
H—	Reparable item. When uneconomically reparable, condemn and dispose at the general support level.
D—	Reparable item. When beyond lower level repair capability, return to depot. Condemnation and disposal not authorized below depot level.

c. *Federal Stock Number.* Indicates the Federal stock number assigned to the item.

NOTE

For requisitioning purposes, the Federal stock number must be converted to the National stock number by adding “-00-” after the Federal stock classification (FSC)

code (first four digits). For example, FSN 6625-553-0142 converts to NSN 6625-00-553-0142.

d. *Part Number*. Indicates the primary number used by the manufacturer (individual, company, firm, corporation, or Government activity), which controls the design and characteristics of the item by means of its engineering drawings, specifications standards, and inspection requirements, to identify an item or range of items.

NOTE

When a stock numbered item is requisitioned, the repair part received may have a different part number than the part being replaced.

e. *Federal Supply Code for Manufacturer (FSCM)*. The FSCM is a 5-digit numeric code listed in SB 708-42 which is used to identify the manufacturer, distributor, or Government agency, etc.

f. *Description*. Indicates the Federal item name and, if required, a minimum description to identify the item.

g. *Unit of Measure (UM)*. Indicates the standard of the basic quantity of the listed item as used in performing the actual maintenance function. This measure is expressed by a two-character alphabetical abbreviation (e.g., ea, in, pr, etc.). When the unit of measure differs from the unit of issue, the lowest unit of issue that will satisfy the required units of measure will be requisitioned.

h. *Quantity Incorporated in Unit*. Indicates the quantity of the item used in the breakout shown on the illustration figure, which is prepared for a functional group, subfunctional group, or an assembly. A "V" appearing in this column in lieu of a quantity indicates that no specific quantity is applicable, (e.g., shims, spacers, etc.).

4. Special Information

The following publications pertain to the Test Set Group, Radar, OQ-59/APS-94D and its components: TM 11-5995-207-12, Test Set Group, Radar, OQ-59/APS-94D.

TM 11-5995-207-45, Test Set Group, Radar OQ-59/APS-94D.

5. How to Locate Repair Parts

a. When Federal stock number or part number is unknown:

(1) *First*. Using the table of contents, determine the functional group within which the repair part belongs. This is necessary since illustrations are prepared for functional groups, and listings are divided into the same groups.

(2) *Second*. Find the illustration covering the functional group to which the repair part belongs.

(3) *Third*. Identify the repair part on the illustration and note the illustration figure and item number of the repair part.

(4) *Fourth*. Using the Repair Parts Listing, find the figure and item number noted on the illustration.

b. When Federal stock number or part number is known:

(1) *First*. Using the Index of Federal stock numbers and part numbers, find the pertinent Federal stock number or part number. This index is in ascending FSN sequence followed by a list of part numbers in ascending alphameric sequence, cross-referenced to the illustration figure number and item number.

(2) *Second*. After finding the figure and item number, locate the figure and item number in the repair parts list.

6. Abbreviations

Not applicable.

7. Recommendations for Maintenance Publications Improvements.

You can help to improve this manual by calling attention to errors and by recommending improvements. Your letter or DA Form 2028 (Recommended Changes to Publications and Blank Forms) should be mailed directly to Commander, US Army Electronics Command, ATTN: AMSEL-MA-Q, Fort Monmouth, NJ 07703. A reply will be furnished direct to you.

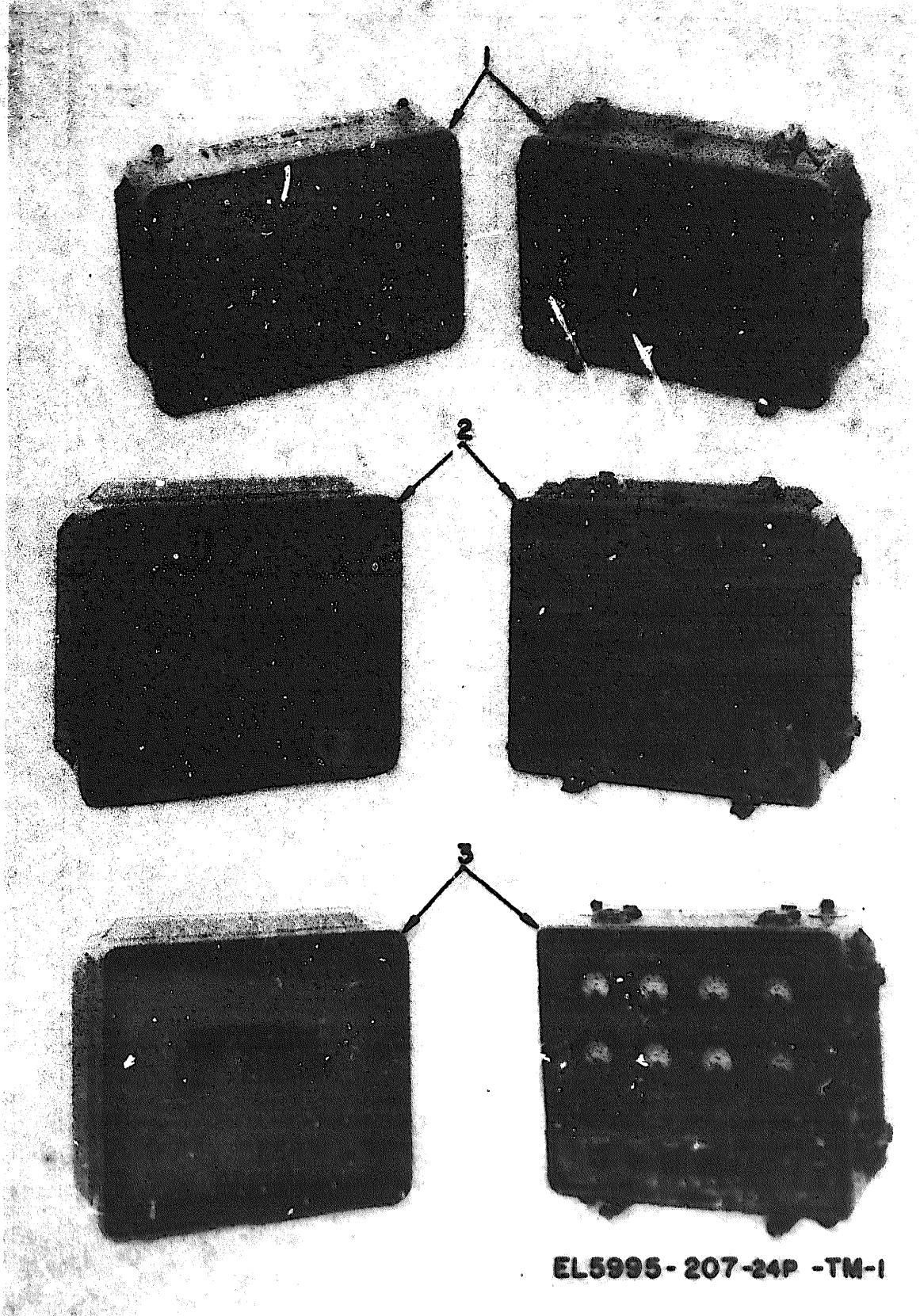


Figure 1. Test Set Group, Radar, 0Q-59/APS-94D

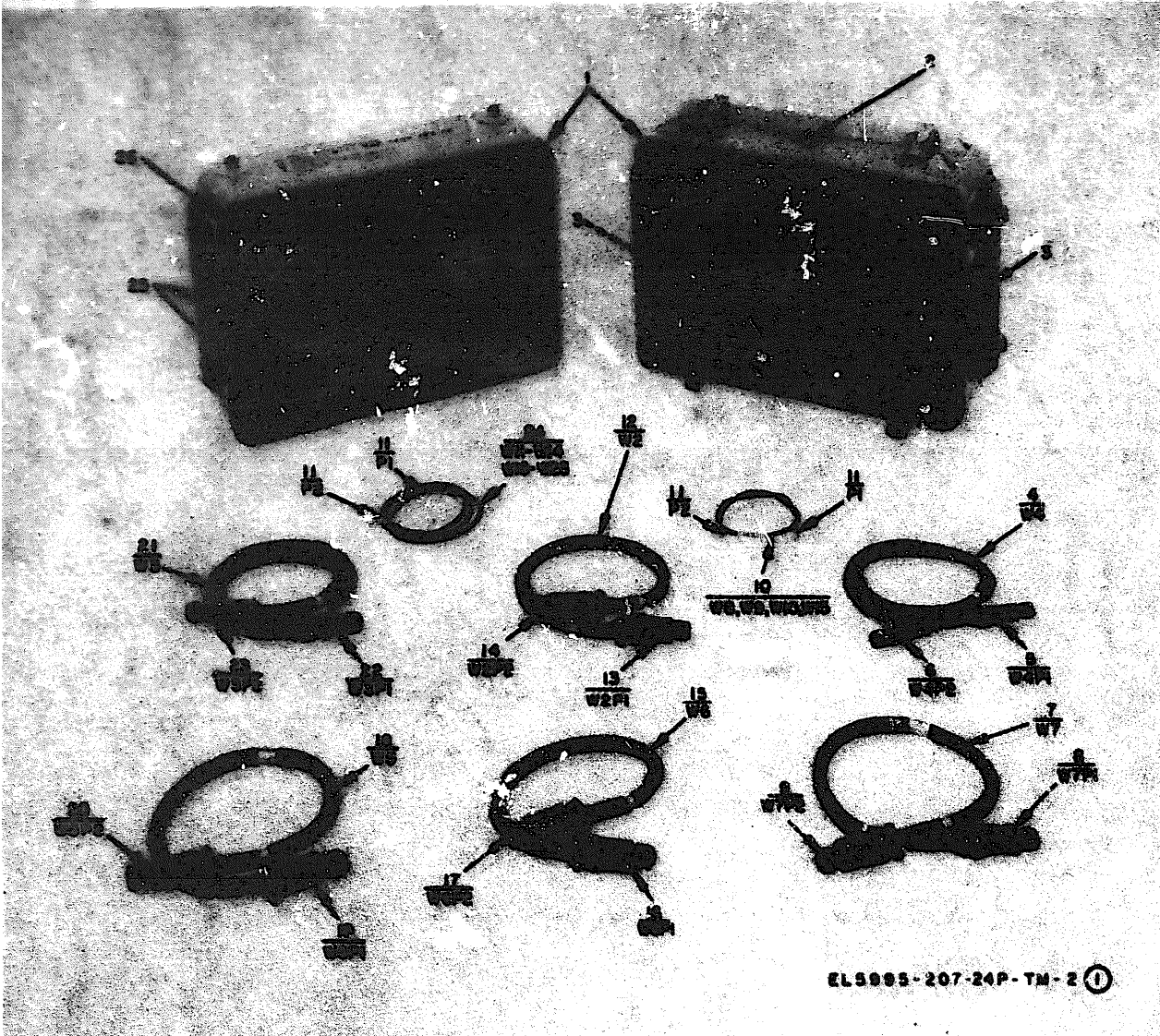


Figure 2. Accessory Kit Radar Test Set Group MK-1209/APS-94D
(Sheet 1 of 2)

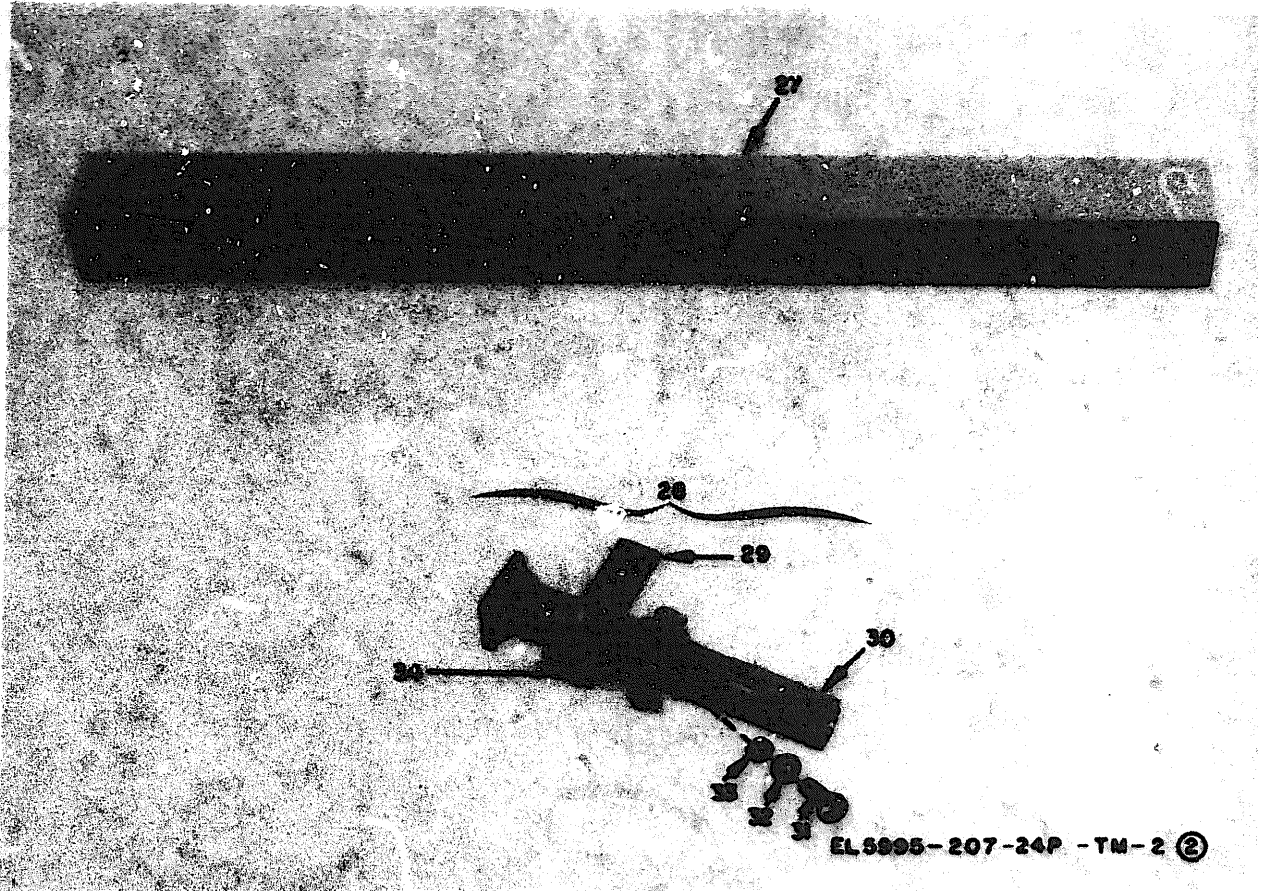
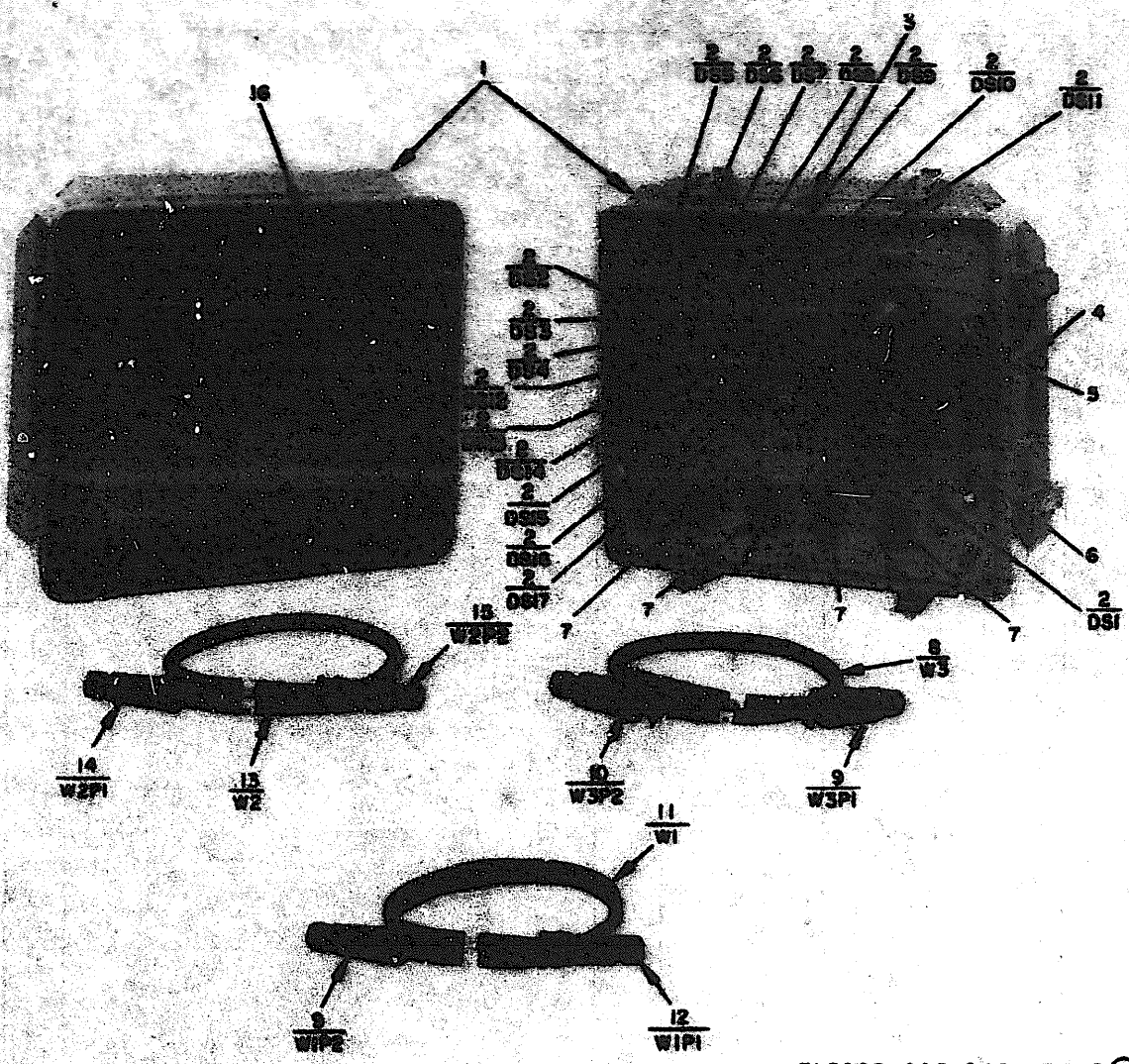


Figure 2. Accessory Kit Radar Test Set Group MK-1209/APS-94D
(Sheet 2 of 2)

SECTION II REPAIR PARTS LIST (CONTINUED)

(1) QUANTITY		(2) UNIT CODE	(3) FEDERAL STOCK NUMBER	(4) PART NUMBER	(5) SPEC	(6) DESCRIPTION	(7) USABLE UNIT CODE	(8) QTY OF HEAD	(9) QTY INC IN UNIT
(10) REQ NO.	(11) ITEM NO.								
3	2	PAGE	6210-763-7744	ME18029-187	96906	LAMP, INCANDESCENT		EA	17
3	3	PAGE	4820-898-3003	2896-037-4	96376	VALVE, PRESSURE RELIEF		EA	1
3	4	PAGE	5340-231-2997	ME18012-5	96906	HANDLE, BOX		EA	2
3	5	PAGE		01F02348001	94990	DIAL, CONTROL		EA	1
3	6	PAGE		01F02347001	94990	DIAL, CONTROL		EA	1
3	7	PAGE	5935-899-9351	ME31181-14C	96906	COVER, ELECTRICAL CONNECTOR		EA	4
3	8	PAGE	6625-489-6523	CH12230U (4FT)	80058	CABLE ASSEMBLY, SPECIAL, ELECTRICAL		EA	1
3	9	PAGE	5935-842-9342	ME3116K14-19FH	96906	CONNECTOR, PLUG, ELECTRICAL		EA	2
3	10	PAGE	5935-060-6329	ME3116K14-FY	96906	CONNECTOR, PLUG, ELECTRICAL		EA	1
3	11	PAGE	6625-493-7473	CH-12233/U (6FT)	80058	CABLE ASSEMBLY, SPECIAL, ELECTRICAL		EA	1
3	12	PAGE	5935-023-0972	ME3116K14-19SW	96906	CONNECTOR, PLUG, ELECTRICAL		EA	1
3	13	PAGE	6625-493-3018	CH12230U (4FT)	80058	CABLE ASSEMBLY, SPECIAL, ELECTRICAL		EA	1
3	14	PAGE	5935-755-3804	ME3115K14-19S	96906	CONNECTOR, PLUG, ELECTRICAL		EA	1
3	15	PAGE	5935-902-6264	ME3116K14-19ST	96906	CONNECTOR, PLUG, ELECTRICAL		EA	1
3	16	PAGE	5330-413-9117	2893-512	93876	GASKET		EA	1
3	17	PAGE	6210-431-2234	1H73-2LC27022	81349	LAMPHOLDER		EA	17
3	18	PAGE		01F02666001	94990	SEMICONDUCTOR DEVICE ASSEMBLY, DIODE		EA	1
3	19	PAGE		01-F022198001	94990	ELECTRONICS COMPONENTS ASSEMBLY		EA	1
3	20	PAGE	5930-655-1521	ME35038-29	96906	SWITCH, TOGGLE		EA	1
3	21	PAGE	5910-010-8718	CH068K103M	81349	CAPACITOR, FIXED, CERAMIC DIELECTRIC		EA	2
3	22	PAGE	5935-480-5148	ME3110K14-5PX	96906	CONNECTOR, RECEPTACLE, ELECTRICAL		EA	1
3	23	PAGE	5950-701-5926	ME75008-34	96906	COIL, RADIO FREQUENCY		EA	3
3	24	PAGE	5910-460-0847	CH068K104M	81349	CAPACITOR, FIXED, CERAMIC DIELECTRIC		EA	1
3	25	PAGE	5910-912-0389	CH21CH180TP3	81349	CAPACITOR, FILLED, ELECTROLYTIC		EA	1
3	26	PAGE	5935-402-1471	ME3110K14-19FW	96906	CONNECTOR, RECEPTACLE, ELECTRICAL		EA	1
3	27	PAGE	5930-503-3861	ME35038-30	96906	SWITCH, TOGGLE		EA	1
3	28	PAGE	5950-439-1119	15E25CT	15755	TRANSFORMER		EA	1
3	29	PAGE	5935-196-7184	ME3110K14-19FY	96906	CONNECTOR, RECEPTACLE, ELECTRICAL		EA	1
3	30	PAGE	5935-481-0920	ME3110K14-19ST	96906	CONNECTOR, RECEPTACLE, ELECTRICAL		EA	1
3	31	PAGE	5930-655-1514	ME35038-22	96906	SWITCH, TOGGLE		EA	1
3	32	PAGE	5990-284-4938	FT884	86197	SYNCHRONIZER, CONTROL TRANSFORMER		EA	2
3	33	PAGE	3010-489-0409	47F02203B001	94990	GEAR ASSEMBLY, SPEED REDUCER		EA	2
3	34	PAGE		01F02522B001	94990	ELECTRONIC COMPONENTS ASSEMBLY		EA	1
3	35	PAGE	5961-957-6865	1H3611	81349	SEMICONDUCTOR DEVICE, DIODE		EA	34
3	36	PAGE	5905-247-8722	RGR328271JS	81349	RESISTOR, FIXED, COMPOSITION		EA	1
3	37	PAGE	5961-951-8797	2N2222	81349	TRANSISTOR		EA	12
3	38	PAGE	5905-104-8356	RGR70822JS	81349	RESISTOR, FIXED, COMPOSITION		EA	11
3	39	PAGE	5905-106-3666	RGR70102JS	81349	RESISTOR, FIXED, COMPOSITION		EA	1
GROUP: 03 MONITOR, ELECTRICAL POWER									
MK-0570/APS-94D									
4	1	PAGE		15F02345B001	94990	CASE, TEST SET		EA	1
4	2	PAGE	5999-161-9182	32F02195B001	94990	SHIELD GASKET, ELECTRONIC		EA	1



EL5995-207-24P - TM-3 ①

Figure 3. Simulator-Monitor SM-567/APS-94D
(Sheet 1 of 3)

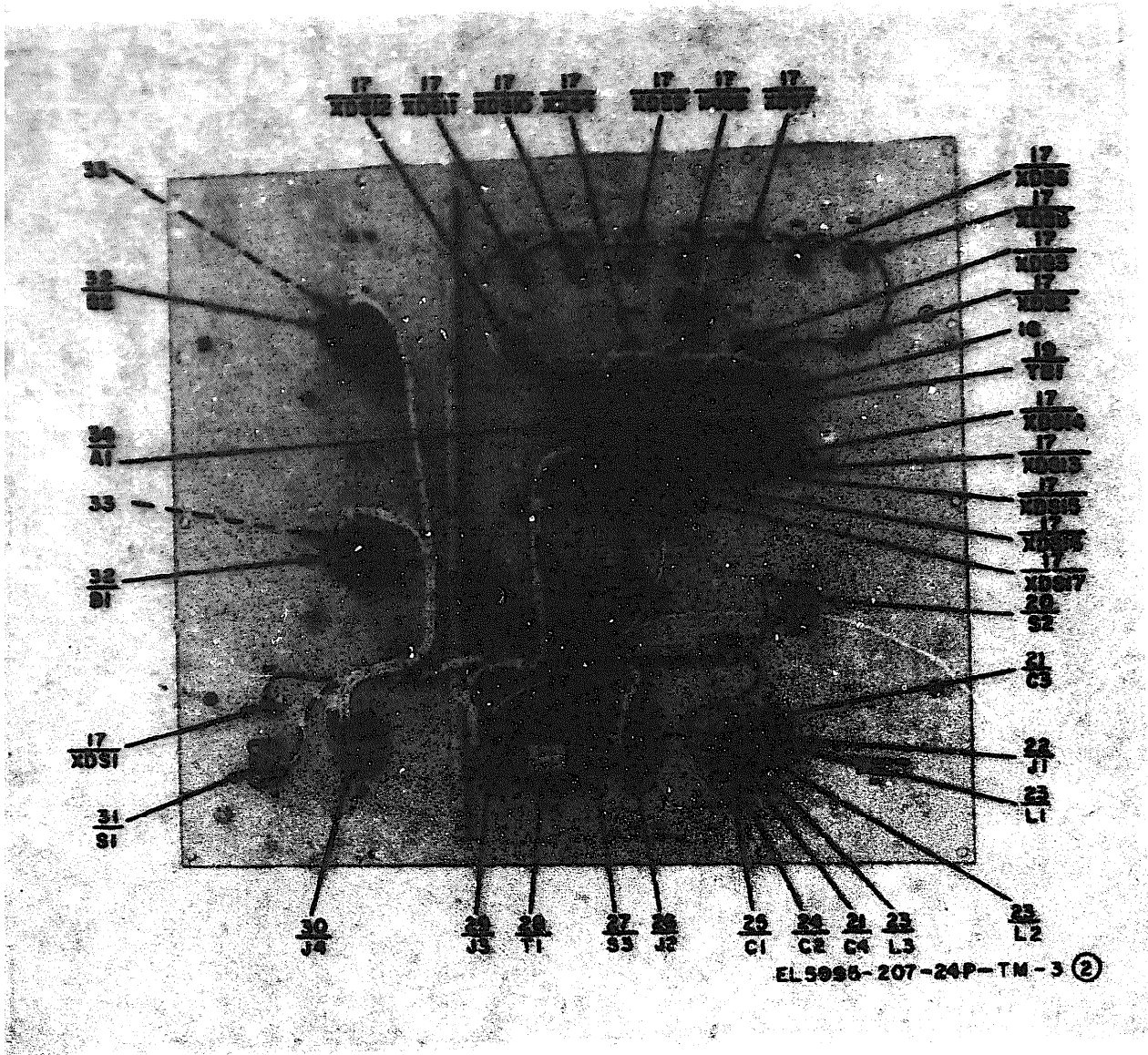


Figure 3. Simulator-Monitor SM-567/APS-94D
(Sheet 2 of 3)

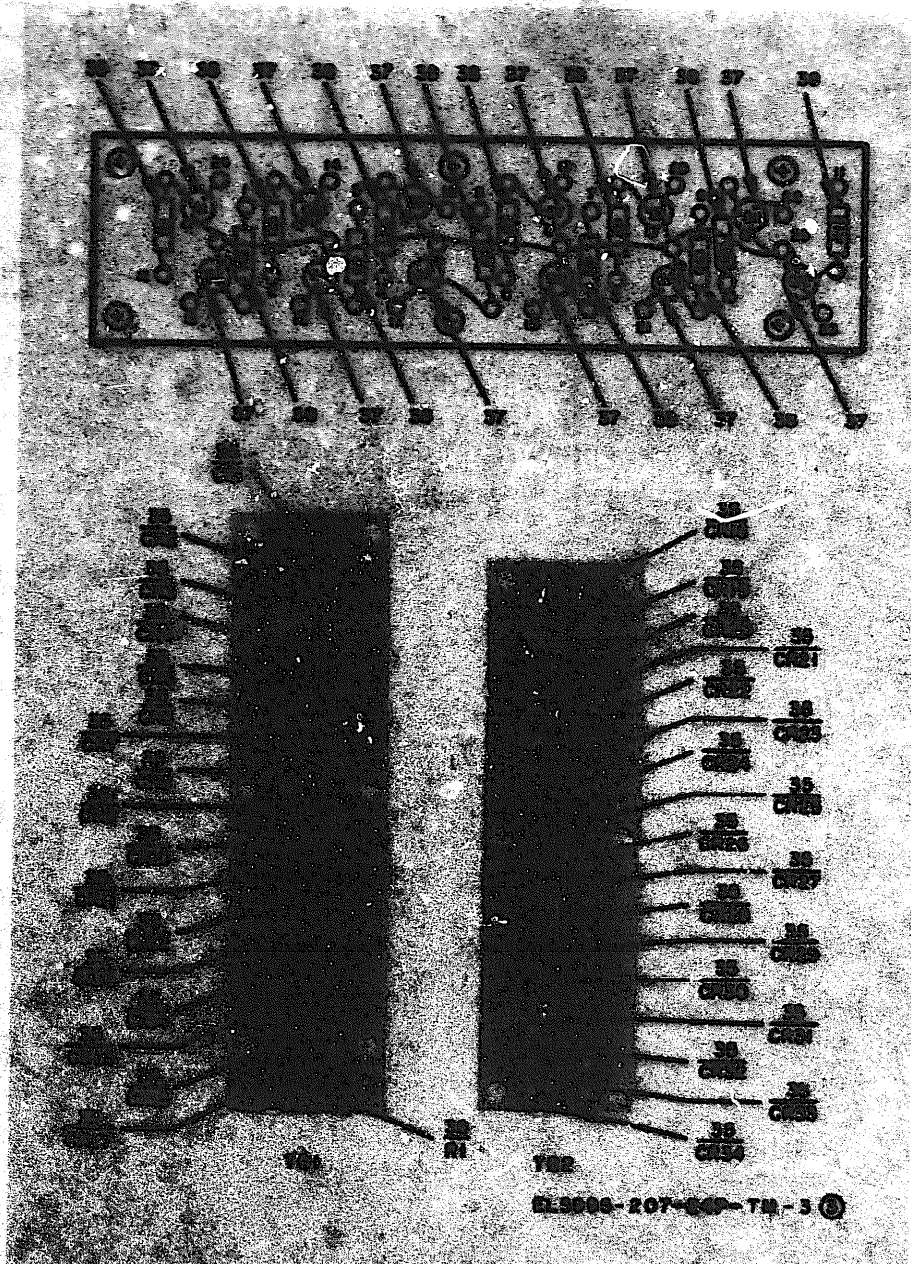
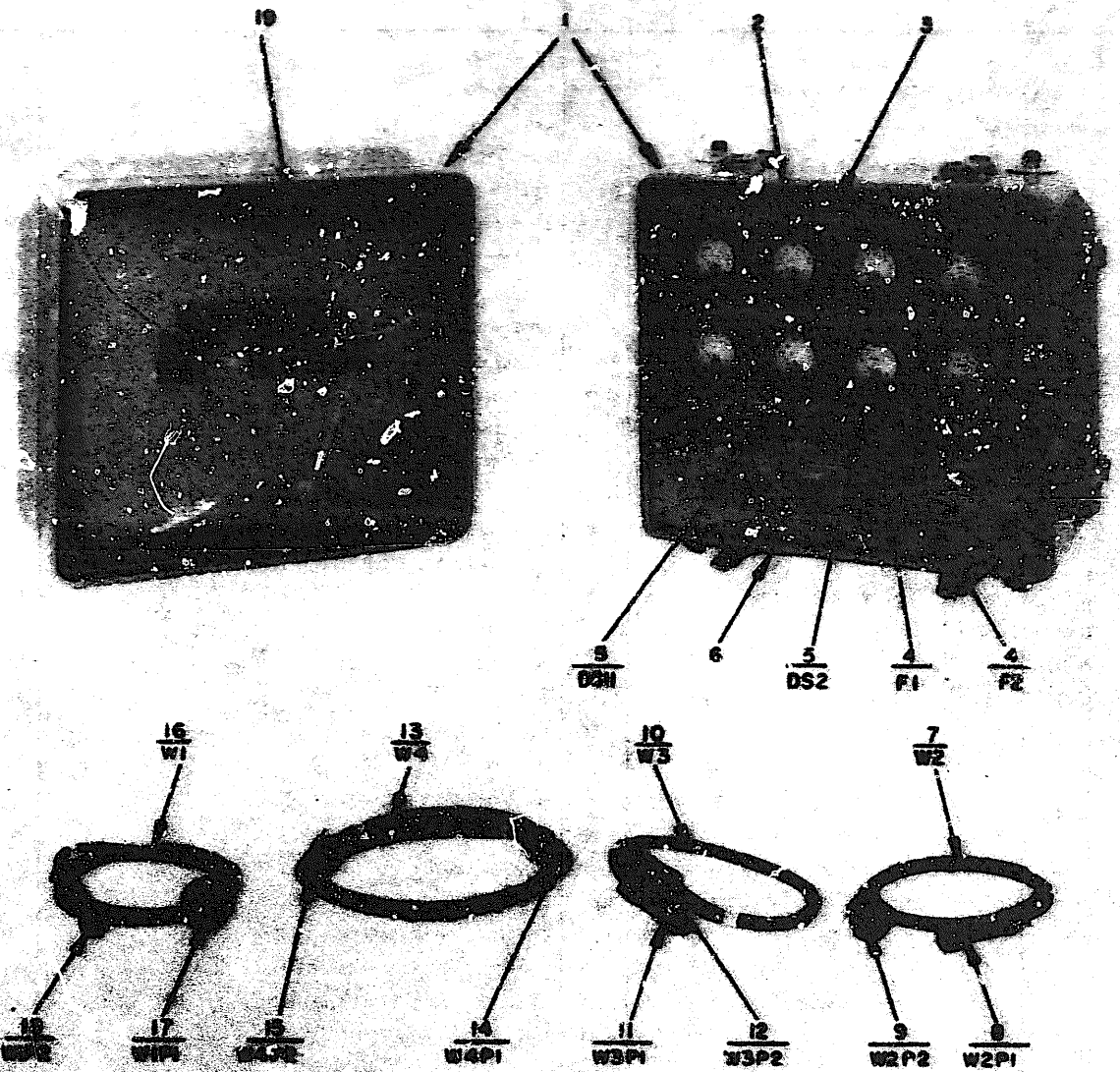


Figure 3. Simulator, Monitor SM-567/APS-94D
(Sheet 3 of 3)

SECTION II REPAIR PARTS LIST (CONTINUED)

44 QUANTITY REQD	45 QUANTITY INSTALLED	46 PART NAME	47 FEDERAL SPECIFICATION NUMBER	48 PART NUMBER	49 PRICE	50 DESCRIPTION	51 UNITS OR CODE	52	53
								UNITS OR CODE	QTY REQD IN UNIT
4	3	PAPER		QT-1435489	94990	SCREW, MACHINE	EA		16
4	4	PAPER	7625-775-9934	FO2A29W3A	81349	FOOT CASSETTE	EA		2
4	5	PAPER	6240-682-3411	8822E	81349	LAMP, GLOW	EA		2
4	6	PAPER	4820-692-3543	2895-037-4	98376	VALVE, PRESSURE RELIEF	EA		1
4	7	PAPER	6625-493-2478	CG-12241/8 (5PT)	80058	CABLE ASSEMBLY, POWER, ELECTRICAL	EA		1
4	8	PAPER		ME27003	96906	CONNECTOR, PLUG, ELECTRICAL	EA		1
4	9	PAPER	5938-901-9872	ME3116P12-18	96906	CONNECTOR, PLUG, ELECTRICAL	EA		1
4	10	PAPER	6625-493-3016	CG-12241/8 (3PT)	80058	CABLE ASSEMBLY, POWER, ELECTRICAL	EA		1
4	11	PAPER	5935-904-3972	ME3116H14-18X	96906	CONNECTOR, PLUG, ELECTRICAL	EA		1
4	12	PAPER	5935-904-3968	ME3116H14-18U	96906	CONNECTOR, PLUG, ELECTRICAL	EA		1
4	13	PAPER	6625-499-3017	CG-12242/8 (5PT)	80058	CABLE ASSEMBLY, POWER, ELECTRICAL	EA		1
4	14	PAPER	3439-901-3342	ME3116H16-11S	96906	CONNECTOR, PLUG, ELECTRICAL	EA		1
4	15	PAPER	5995-855-3389	ME3116H16-11P	96906	CONNECTOR, PLUG, ELECTRICAL	EA		1
4	16	PAPER	6625-494-6616	CG-12240/8 (6PT)	80058	CABLE ASSEMBLY, POWER, ELECTRICAL	EA		1
4	17	PAPER	5932-781-8769	ME3116P14-18	96906	CONNECTOR, PLUG, ELECTRICAL	EA		1
4	18	PAPER	5935-290-4812	ME27011	96906	CONNECTOR, PLUG, ELECTRICAL	EA		1
4	19	PAPER	5330-411-9117	2895-512	98376	GASKET	EA		1
4	20	PAPER	6210-183-0454	1M75LC15YD3	81349	LAMPHOLDER	EA		2
4	21	PAPER		1M4592	81349	SEMICONDUCTOR DEVICE, DIODE	EA		1
4	22	PAPER	6625-668-8036	72FC2083B001	94990	VOLTMETER	EA		3
4	23	PAPER	5905-997-0968	RE79824R3	81349	RESISTOR, FIXED, WIREWOUND	EA		3
4	24	PAPER		72FC2084B001	94990	AMMETER	EA		3
4	25	PAPER	5935-026-2368	ME3110H14-3P	96906	CONNECTOR, RECEPTACLE, ELECTRICAL	EA		1
4	26	PAPER	5935-904-0778	ME3110H12-3P	96906	CONNECTOR, RECEPTACLE, ELECTRICAL	EA		1
4	27	PAPER	5940-983-6044	37TB3	81349	TERMINAL BOARD	EA		1
4	28	PAPER	5935-402-7175	ME3110H14-5BW	96906	CONNECTOR, RECEPTACLE, ELECTRICAL	EA		1
4	29	PAPER	5910-725-4794	CM06FD222F03	81349	CAPACITOR, FIXED, MICA DIELECTRIC	EA		1
4	30	PAPER	5935-079-3592	ME3110H16-11S	96906	CONNECTOR, RECEPTACLE, ELECTRICAL	EA		1
4	31	PAPER	5910-717-3539	CM06FD332F03	81349	CAPACITOR, FIXED, MICA DIELECTRIC	EA		2
4	32	PAPER	5920-892-9311	FBE260	81349	FUSEHOLDER	EA		2
4	33	PAPER	5930-503-5681	ME35038-30	96906	SWITCH, TOGGLE	EA		1
4	34	PAPER	5905-106-9348	ME2001543S	81349	RESISTOR, FIXED, COMPOSITION	EA		2
4	35	PAPER	5910-460-0847	CR06EC104M	81349	CAPACITOR, FIXED, CERAMIC DIELECTRIC	EA		1
4	36	PAPER	5910-982-0389	CL21CH180TF3	81349	CAPACITOR, FIXED, ELECTROLYTIC	EA		1
4	37	PAPER	5930-702-8472	ME25308-222	96906	SWITCH, TOGGLE	EA		1
4	38	PAPER	5925-258-9715	ME25017-25	96906	CIRCUIT BREAKER	EA		1
4	39	PAPER	5925-841-0679	7276-101-5	82647	CIRCUIT BREAKER	EA		1
4	40	PAPER	5940-269-2219	FB01FA04	81349	POST, BINDING	EA		1
4	41	PAPER	6625-470-7541	72FC2085B001	94990	AMMETER	EA		1
4	42	PAPER	6625-643-1792	72FC2082B001	94990	VOLTMETER	EA		1
4	43	PAPER	6625-539-9638	MSA500	81349	SHUNT, INSTRUMENT	EA		1
4	44	PAPER	6625-471-8694	01PC2046B001	94990	ELECTRICAL COMPONENTS ASSEMBLY	EA		1



EL 5995-207-24P-TM-4 ①

Figure 4. Monitor, Electrical Power MX-8570/APS-94D
(Sheet 1 of 2)

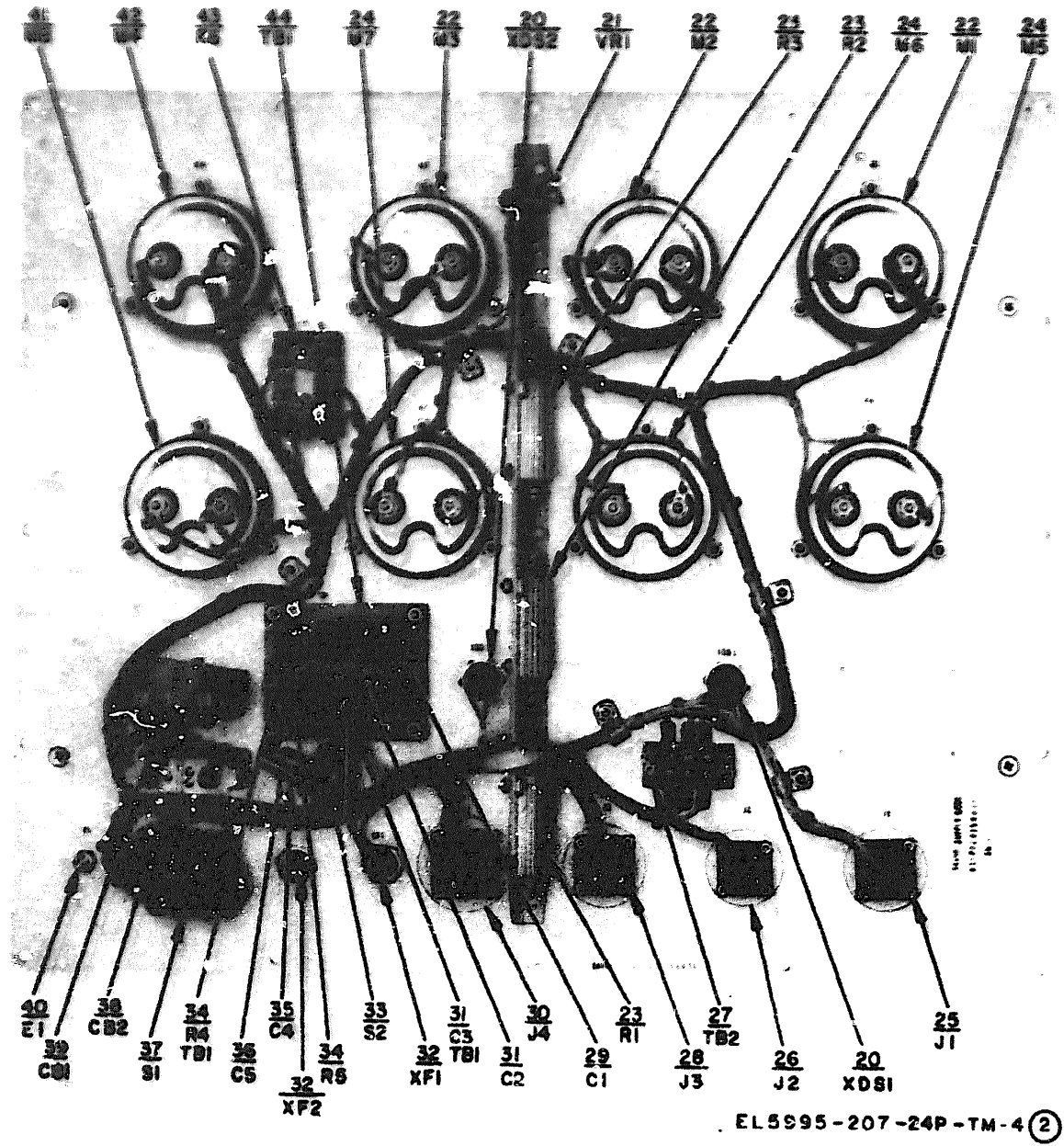
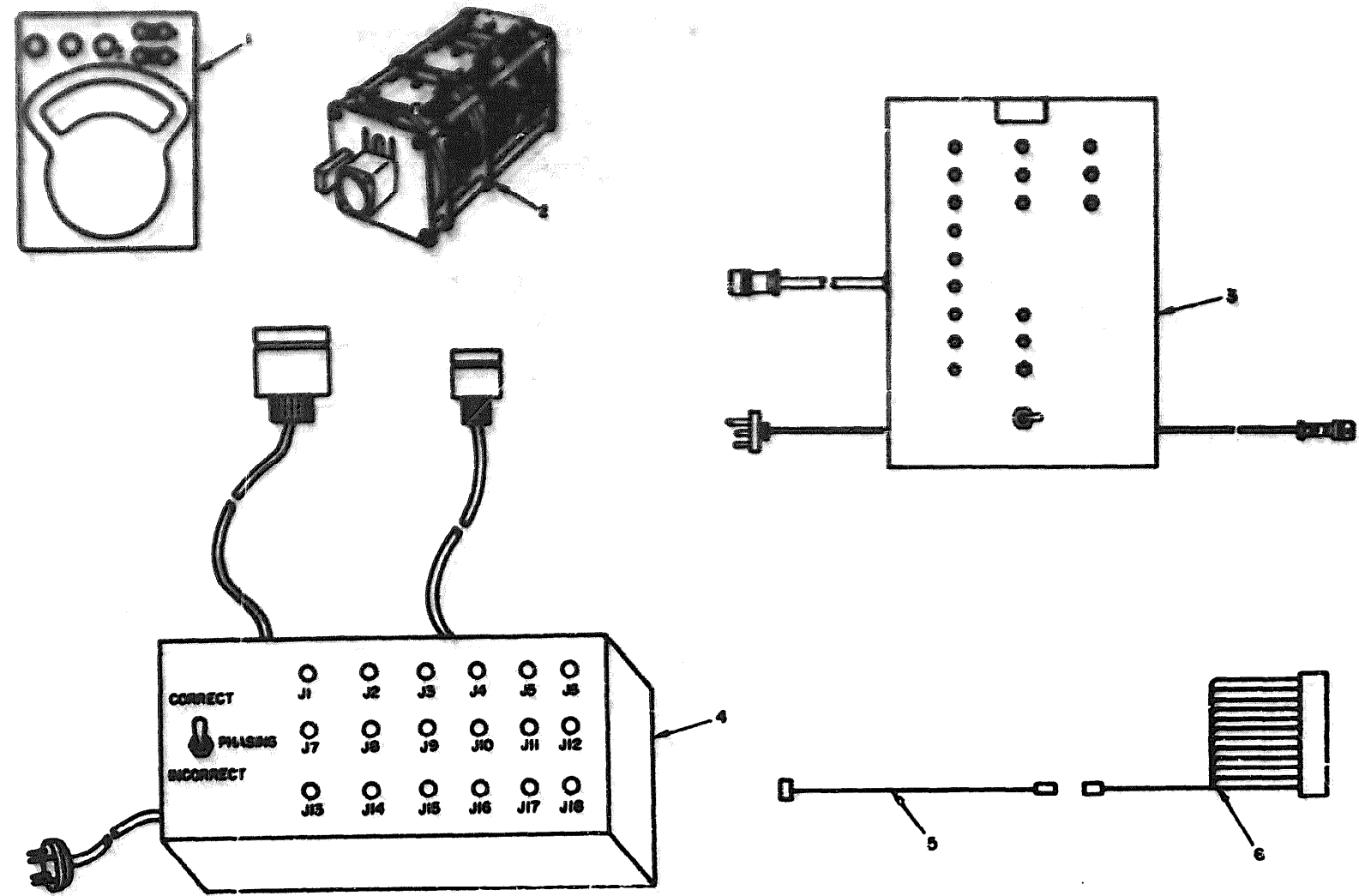


Figure 4 (2) . Monitor, Electrical Power MX-8570/APS-94D.
(Sheet 2 of 2)

SECTION II SPECIAL TOOLS LIST

01 CLASSIFICATION		02 DATE CODE	03 FEDERAL STOCK NUMBER	04 PART NUMBER	05 FORM	06 DESCRIPTION	07 UNIT OF MEAS	08 QTY INC IN UNIT
01-1 FED NO.	01-2 ITEM NO.					USABLE OR CODE		
GROUP: 04 SPECIAL TOOLS								
5	1	FIND	6625-811-1311	370-3903005	4500E	ARMATURE DOI: 1 AUTH FOR 1-10 EQUIP	EA	1
5	2	FIND	5950-557-6252	1223	24655	TRANSFORMER VARIABLE DOI: 1 AUTH FOR 1-10 EQUIP	EA	1
5		FIND	6625-23-9724	AL-128100	14850	TEST FACILITIES KIT FOR OQ-50/AFS-04D, OQ-51/AFS-04D, OQ-54V(1)/AFS-04D AND AN/AFS-01 CONSISTS OF:		
5	3	FIND		AL-12814D	14850	TEST FLYING POWER MONITOR DOI: 1 AUTH FOR 1-10 EQUIP	EA	1
5	4	FIND		AL-12820C	14850	TEST FLYING SIMULATOR MONITOR DOI: 1 AUTH FOR 1-10 EQUIP	EA	1
5	5	FIND		50-3554B	14850	TEST CABLE NO. 1 FOR SIMULATOR MONITOR DOI: 1 AUTH FOR 1-10 EQUIP	EA	1
5	6	FIND		AL-12811D	14850	TEST CABLE NO. 2 FOR SIMULATOR MONITOR DOI: 1 AUTH FOR 1-10 EQUIP	EA	1



EL 5995-207-24P-TM-5

Figure 5. Special Tools.

SECTION IV FEDERAL STOCK NUMBER AND PART NUMBER INDEX

STOCK NUMBER	FIG. NO.	ITEM NO.	STOCK NUMBER	FIG. NO.	ITEM NO.
3010-489-0409	3	33	5935-850-9157	2	11
4820-898-3003	2	2	5935-850-9545	2	17
4820-898-3003	3	3	5935-851-0233	2	20
4820-898-3003	4	6	5935-899-9361	3	7
5305-094-6670	2	31	5935-901-8671	4	9
5310-043-3299	2	33	5935-904-0778	4	26
5310-880-9978	2	32	5935-926-7502	4	12
5330-162-5720	2	34	5935-982-6264	3	15
5330-411-9117	2	26	5935-994-2572	4	11
5330-411-9117	3	16	5940-269-2219	4	40
5330-411-9117	4	19	5340-983-6044	4	27
5340-901-2957	2	3	5950-439-1119	3	28
5340-801-2957	3	4	5950-557-6988	5	2
5505-10-8330	3	38	5950-701-5926	3	23
5505-106-3666	3	39	5961-951-8757	3	37
5905-104-9348	4	34	5961-957-6865	3	35
5905-247-722	3	36	5985-078-4068	2	29
5305-957-69	4	23	5990-284-4938	3	32
5910-010-5716	3	21	5999-161-9182	4	2
5910-460-0847	3	24	6210-183-0454	4	20
5910-460-0847	4	35	6210-438-2234	3	17
5910-717-3539	4	31	6240-682-3411	4	5
5910-725-4794	4	29	6240-763-7744	3	2
5910-982-0389	3	25	6625-283-9701	5	
5910-982-0389	4	36	6625-412-2035	2	12
5920-877-9934	4	4	6625-470-7541	4	41
5920-892-9311	4	32	6625-471-8694	4	44
5925-2589715	4	38	6625-489-0424	2	21
5925-841-0679	4	39	6625-489-0425	2	7
5930-503-3881	3	27	6625-489-6095	2	15
5930-503-3881	4	33	6625-489-6096	2	4
5930-655-1514	3	31	6625-489-6097	2	18
5930-655-1521	3	20	6625-489-6098	3	8
5930-702-8472	4	37	6625-493-3016	4	10
5935-060-6325	3	10	6625-493-3017	4	13
5935-079-3592	4	30	6625-493-3018	3	13
5935-081-5137	2	14	6625-493-7473	3	11
5935-086-2368	4	25	6625-493-7476	2	24
5935-190-4812	4	18	6625-493-7478	4	7
5935-196-7184	3	29	6625-493-7479	2	10
5935-402-1471	3	26	6625-494-6616	4	16
5935-402-7175	4	28	6625-539-9638	4	43
5935-480-5148	3	22	6625-643-1792	4	42
5935-481-0920	3	30	6625-668-8036	4	22
5935-755-3630	2	8	6625-762-4887	1	2
5935-755-3804	3	14	6625-762-4890	2	30
5935-781-8765	4	17	6625-801-1311	5	1
5935-812-2814	2	13	6625-933-0879	2	25
5935-812-2815	2	16	6625-938-0229	1	1
5935-815-3389	4	15	6625-938-0231	1	3
5935-815-3392	4	14	6625-938-0235	2	28
5935-816-8643	2	22			
5935-823-0972	3	12			
5935-827-4019	2	9			
5935-833-6619	2	19			
5935-836-1417	2	23			
5935-842-9342	3	9			
5935-844-4055	2	6			
5935-844-4216	2	5			

SECTION IV TOOL NUMBER AND PART NUMBER INDEX (CONTINUED)

PART NUMBER	FSCM	FIG. NO.	ITEM NO.	PART NUMBER	FSCM	FIG. NO.	ITEM NO.
A1-12814D	14850	5	3	MS3116E14-5SX	96906	4	11
A1-12817D	14850	5	6	MS3116E16-26P	96906	2	23
A1-12819D	14850	5	6	MS3116E16-26S	96906	2	22
A1-12820	14850	5	4	MS3116E16-11P	96906	4	15
003618/U(6FT)	80058	2	24	MS3116E16-11S	96906	4	14
003618U 3FT	80058	2	10	MS3116E16-32P	96906	2	9
CX065X103U	81349	3	21	MS3116E16-32PW	96906	2	14
CX06EX104U	81349	3	24	MS3116E16-32S	96906	2	8
CX06EX104U	81349	4	35	MS3116E16-32SW	96906	2	13
CL21CH180TP3	81349	3	25	MS3116E20-41P	96906	2	20
CL21CH080TP3	81349	4	36	MS3116E20-41PW	96906	2	17
CM06FD222J03	81349	4	29	MS3116E20-41S	96906	2	16
CM06FD332J03	81349	4	31	MS3116E20-41SW	96906	2	19
C01921U	80058	2	29	MS3116F12-3S	96906	4	9
CX-12231/U(6FT)	80058	2	12	MS3116F14-5S	96906	4	17
CX-12232/U(4FT)	80058	2	7	MS3181-14C	96906	3	7
CX-12233/U(6FT)	80058	3	11	MS35038-22	96906	3	31
CX-12234/U(4FT)	80058	2	21	MS35038-29	96906	3	20
CX-12236/U(4FT)	80058	3	13	MS35038-30	96906	3	27
CX-12239/U(4FT)	80058	3	8	MS35038-30	96906	4	33
CX-12235/U(6FT)	80058	2	4	MS35338-42	96906	2	33
CX-12236/U(6FT)	80058	2	15	MS51957-45	96906	2	31
CX-12237/U(4FT)	80058	2	18	MS75008-34	96906	3	23
CX-12240/U(6FT)	80058	4	16	MX8741APS94D	80058	2	28
CX-12241/U(6FT)	80058	4	7	MX-8570/APS-94D	80058	1	3
CX-12242/U(5FT)	80058	4	13	M2G3	24655	5	2
CX-12243/U(3FT)	80058	4	10	M39012-16-0002	81349	2	11
DA561U	80058	2	30	NE51H	81349	4	5
D9-3554B	14850	5	5	PB01FA04	81349	4	40
ETH8A4	86197	3	32	RCR07G103JS	81349	3	39
FRM26G	81349	4	32	RCR07G822JS	81349	3	38
F02A250V3A	81349	4	4	RCR20G154JS	81349	4	34
LH73-2LC27GT2	81349	3	17	RCR32G271JS	81349	3	36
LH75LC15YD3	81349	4	20	RE75G24R3	81349	4	23
MK1209APS94D	80058	1	1	SM567APS94D	80058	1	2
MSA500	81349	4	43	ZSP2-2004	98376	2	25
MS15795-807	96906	2	32	ZSP5-512	98376	2	26
MS18012-5	96906	2	3	ZSP5-512	98376	3	16
MS18012-5	96906	3	4	ZSP5-512	98376	4	19
MS18029-387	96906	3	2	ZSP6-037-4	98376	2	2
MS25017-25	96906	4	38	ZSP6-037-4	98376	3	3
MS25308-222	96906	4	37	ZSP6-037-4	98376	4	6
MS27008	96906	4	8	01P02046B001	94990	4	44
MS27011	96906	4	18	01P02346B001	94990	3	5
MS3110E12-3P	96906	4	26	01P02347B001	94990	3	6
MS3110E14-19PW	96906	3	26	01P02322B001	94990	3	34
MS3110E14-19PY	96906	3	29	01P02666B001	94990	3	18
MS3110E14-5P	96906	4	25	01-P02219B001	94990	3	19
MS3110E14-5PX	96906	3	22	03-14364A09	94990	4	3
MS3110E14-5SW	96906	4	28	07P03513B001	94990	2	27
MS3110E14-19SY	96906	3	30	1N3611	81349	3	35
MS3110E18-11S	96906	4	30	1N4552	81349	4	21
MS3115E14-19S	96906	3	14	15E25CT	15755	3	28
MS3116E14-19PW	96906	3	9	15P02338B001	94990	2	1
MS3116E14-19PX	96906	2	6	15P02345B001	94990	3	1
MS3116E14-PY	96906	3	10	15P02345B001	94990	4	1
MS3116E14-19SW	96906	3	12	2N2222	81349	3	37
MS3116E14-19SX	96906	2	5	32P02195B001	94990	4	2
MS3116E14-19SY	96906	3	15	37TB3	81349	4	27
MS3116E14-5PW	96906	4	12				

6069-2

MSA-PM 445-2-73

SECTION IV FEDERAL STOCK NUMBER AND PART NUMBER INDEX (CONTINUED)

PART NUMBER	FSCM	FIG. NO.	ITEM NO.	PART NUMBER	FSCM	FIG. NO.	ITEM NO.
370-2903005	65092	5	1				
4700000000	94990	3	33				
6530-1212	18365	2	34				
727-020-3005	94990	4	42				
727-020-3005	94990	4	22				
727-020-3005	94990	4	24				
727-002-3005	94990	4	41				
7276-102-5	82647	5	39				

Official:

FRED C. WEYAND
General, United States Army
Chief of Staff

PAUL T. SMITH
Major General, United States Army
The Adjutant General

DISTRIBUTION:

To be distributed in accordance with DA Form 12-86, (qty req block no. 67) Organizational Maintenance requirements for AN/APS-94.

*U.S. GOVERNMENT PRINTING OFFICE: 1970-001

DEPARTMENT OF THE ARMY
IF AS PUBLICATIONS CENTER
1403 BUCKNER ROAD
F. LEON, MISSOURI 63114
OFFICIAL BUSINESS
ALTY FOR PRIVATE USE 3300

POSTAGE AND FEES PAID
DEPARTMENT OF THE ARMY
GDD 314



Faint, illegible text, possibly a return address or recipient information.

Vertical text on the right margin, possibly a reference number or date.

END

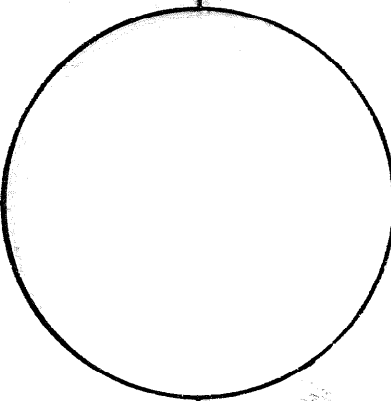
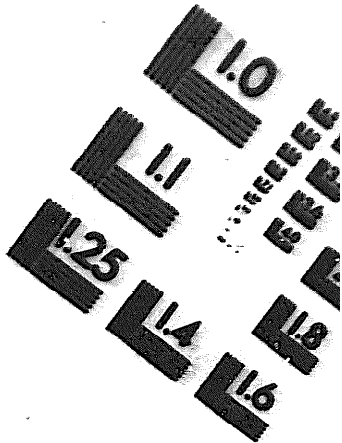
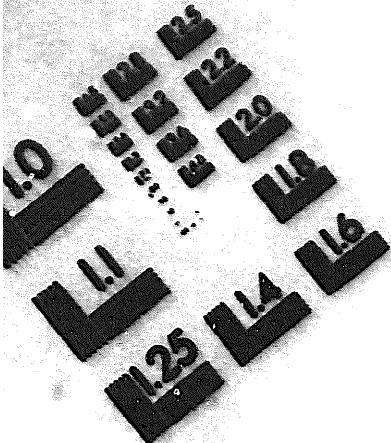
03-17-8

DATE





MICROFORM TEST TARGET



150 MM

1.0 mm (ø= .01 mm)

ABCDEFGHIJKLMN OPQRSTUVWXYZ 1234567890
abcdefghijklmnopqrstuvwxyz %& / ' 1/2 1/4 3/4 —→ + x & @ *

1.5 mm (ø= 1.09 mm)

ABCDEFGHIJKLMN OPQRSTUVWXYZ 1234567890
abcdefghijklmnopqrstuvwxyz %& / ' 1/2 1/4 3/4 —→ + x & @ *

2.0 mm (ø= 1.37 mm)

ABCDEFGHIJKLMN OPQRSTUVWXYZ
abcdefghijklmnopqrstuvwxyz
1234567890 \$ % & / ' 1/2 1/4 3/4 —→ + x & @ *

2.5 mm (ø= 1.77 mm)

ABCDEFGHIJKLMN OPQRSTUVWXYZ
abcdefghijklmnopqrstuvwxyz
1234567890 \$ % & / ' 1/2 1/4 3/4 —→ + x & @ *

1.0 mm (ø= .01 mm)

ABCDEFGHIJKLMN OPQRSTUVWXYZ 1234567890
abcdefghijklmnopqrstuvwxyz %& / ' 1/2 1/4 3/4 —→ + x & @ *

1.5 mm (ø= 1.09 mm)

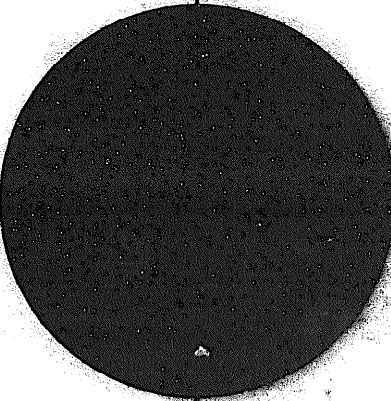
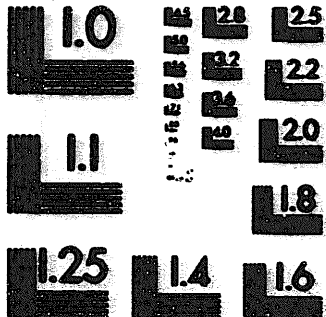
ABCDEFGHIJKLMN OPQRSTUVWXYZ 1234567890
abcdefghijklmnopqrstuvwxyz %& / ' 1/2 1/4 3/4 —→ + x & @ *

2.0 mm (ø= 1.37 mm)

ABCDEFGHIJKLMN OPQRSTUVWXYZ
abcdefghijklmnopqrstuvwxyz
1234567890 \$ % & / ' 1/2 1/4 3/4 —→ + x & @ *

2.5 mm (ø= 1.77 mm)

ABCDEFGHIJKLMN OPQRSTUVWXYZ
abcdefghijklmnopqrstuvwxyz
1234567890 \$ % & / ' 1/2 1/4 3/4 —→ + x & @ *



200 MM

250 MM

